



Institute of Transportation Engineers New York Upstate Section

A Community of Transportation Professionals
www.iteNYupstate.org

FALL 2010

The INTERCHANGE

President's Message By Timothy Trabold, AICP



Greetings Fellow ITE Members,

Each time I sit down to compose this newsletter article I'm continually amazed at how quickly time passes. Right now it's mid-October and we're less than two weeks away from our Annual Section Meeting in Latham, NY! So

here's a quick summary of what's been going on and where we're headed.

The Quarter in Review

On August 10th Steve Gayle graciously accepted the *ITE 2010 District/Section Newsletter Award for circulation less than 250!* The award was presented at the Institute's Annual Meeting in Vancouver, British Columbia and it was the fifth time our NY Upstate Section was recognized with this award in the past ten years. Kudos again to Christina Douglas, our newsletter editor, who does the heavy lift to assemble each issue.

Kim Fabend is putting the finishing touches on this year's Annual Awards program. While we were not overwhelmed by the number of submissions, the applications were outstanding. This is one area where we can do better and it is really up to all of us to be on the lookout for those special projects and people deserving recognition. It is a big deal to both your company's image and to the careers of those honored by their peers. Put a project or person nomination on your list of things to do for next year.

Speaking of projects, are you aware that Western NY has a project being considered as the BEST Transportation Project in the United States? Yes, it's

NYSDOT's U.S. Route 62 Hamburg Project – the only top 10 nominee from New York State in *America's Transportation Awards!* The **People's Choice Award** is just one of two national awards sponsored by the American Association of State Highway & Transportation Officials (AASHTO), AAA, and the US Chamber of Commerce. A Grand Prize will also be selected by a panel of transportation experts. Since the People's Choice Award will be determined by on-line voters, **show your support and vote today!** Here's the link:

<http://www.americastransportationaward.org/voting.aspx>

Those of you that interact with NYSDOT personnel on a regular basis have undoubtedly noticed a significant change within their ranks lately. The genesis of course was the early retirement option which many long-time employees simply could not pass up. Having attended a half-dozen retirement parties in the last month, I can attest to the

(Continued on page 6)

In this Issue

| | |
|---|------------|
| President's Message | 1 |
| Treasurer Election | 2 |
| New Members..... | 2 |
| Tips and Trends in Transportation | 3 |
| 2011 District Meeting..... | 4 |
| Roadway Safety Improvements | 5 |
| Business Advertisements..... | 7-9 |
| Annual Meeting Registration..... | Attachment |



The INTERCHANGE

A quarterly publication of the New York Upstate Section of the Institute of Transportation Engineers. Send comments or articles to:

Christina L. Douglas - Editor
☎ (518) 453-4586
✉ cdouglas@chacompanies.com

2010 NY Upstate Section Officers

President

Tim Trabold, AICP
☎ (716) 856-2026
✉ ttrabold@gbnrtc.org

Vice-President

Kim Fabend, P.E., PTOE
☎ (315) 703-4405
✉ kfabend@cscos.com

Secretary

Meaghan Capuano, E.I.T.
☎ (585) 753-7753
✉ mpartelow@monroecounty.gov

Treasurer

Mark Sargent, P.E.
☎ (518) 446-0396
✉ msargent@cmellp.com

Past President

Mike Wieszchowski, P.E., PTOE
☎ (518) 458-7112
✉ mwieszchowski@labergegroup.com

Director

Amy Dake, P.E., PTOE
☎ (585) 272-4660
✉ adake@srfa.net

Local Coordinators

Albany

Shelly Johnston
☎ (518) 446-0396
✉ sjohnston@cmellp.com

Buffalo

Jennifer Michniewicz
☎ (800) 274-9000 x 3012
✉ JMichniewicz@ClarkPatterson.com

Rochester

Adam Frosino
☎ (585) 413-5653
✉ adam.frosino@stantec.com

Southern Tier

Cynthia Paddick
☎ (607) 772-2443
✉ CPaddick@co.broome.ny.us

Syracuse

Tony DaRin
☎ (315) 457-5200
✉ adarin@bartonandloguidice.com

Also find us at: www.itenyupstate.org

Don't Forget to Vote!

You should have received an email from *electionsonline* for the 2010 ITE NY Upstate Section Treasurer election. For the Treasurer election, the individual elected will serve as the Section Treasurer for 2011, and rotate to the other officer positions (Secretary, Vice-President, President) for subsequent years.

Please support the Section by participating in the election. Electronic ballots are due by October 20th. Results will be announced at the Section Meeting on October 25th in Latham, NY. Good luck to our candidates!

Treasurer Candidates



Tom George, P.E.
NITTEC



Jeffrey Lebsack, P.E., PTOE, AICP
Hatch Mott MacDonald

Welcome New Members

The ITE NY Upstate Section is proud to welcome our newest members. Below is a list of members that have joined the Section since our last publication. We look forward to meeting you at our next event!

Stephanie Bowker
Student
University of Colorado, Denver

Alexander Kerr, EIT
Engineer I
Barton & Loguidice, P.C.

Ross Sheckler
Managing Partner
iCone Products, LLC

Wilfredo Yushimito
Student
Rensselaer Polytechnic Institute





Tips and Trends in Transportation

Compiled by Jim Harris with all contributions from Martin Bretherton

2010 Interactive Highway Safety Design Model

The U.S. Federal Highway Administration has released the 2010 version of its Interactive Highway Safety Design Model (IHSDM), which is a suite of software analysis tools for evaluating safety and operational effects of geometric design decisions on two-lane rural highways, rural multilane highways, and urban/suburban arterials. IHSDM is a decision-support tool. The 2010 version includes six evaluation modules that cover crash prediction, policy review, design consistency, intersection review, traffic analysis, and driver and vehicle modules.



The updated crash prediction module is designed to serve as a faithful implementation of the recently released [Highway Safety Manual's](#) (HSM's) Part C – Predictive Methods for two-lane rural highways (HSM - Chapter 10), multi-lane rural highways (HSM - Chapter 11) and urban and sub-urban arterials (HSM - Chapter 12). <http://www.ihsdm.org/wiki/Welcome>

Practice-Ready Papers Searchable Database Now Available

TRB has launched a new Practice-Ready Papers (PRP) database that allows users to search for papers by keywords, title, author, index term, subject area, and date of publication. In addition to the enhanced search capabilities, the new database includes links to the full text of papers of interest to PRP database users. Practice-ready papers are identified by TRB standing committees and are defined as those in which the research results presented may make an immediate or near-immediate contribution to the solution of a problem with minimal or no additional needed research. The new PRP database includes practice-ready papers back to 2006. Links to abstracts of practice-ready papers produced between 2005 and 1998 are still available under the original catalogue format on TRB's website. <http://prp.trb.org/>

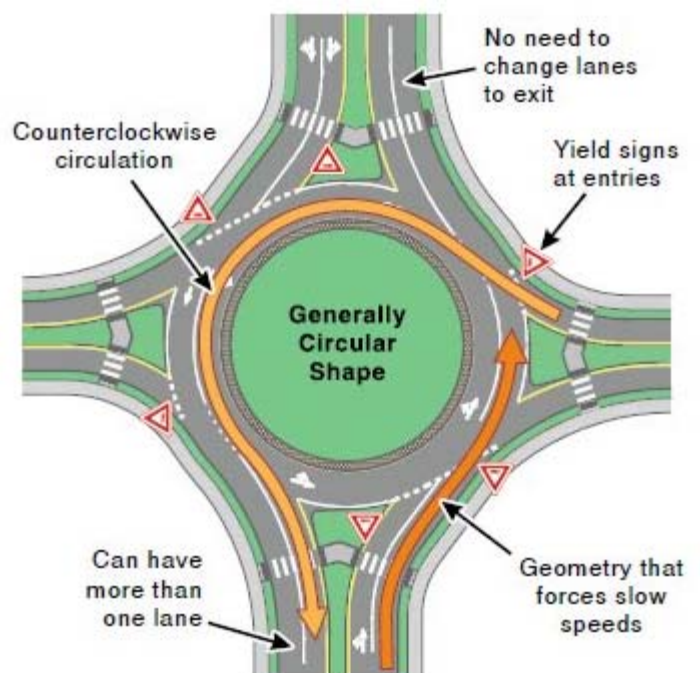
Roundabouts (Report FHWA-SA-10-006) and Mini-Roundabouts (Report FHWA-SA-10-007).

The new Roundabouts technical summary explores the characteristics of modern roundabouts while reinforcing the need to apply a principles-based approach to design. It presents an overview of the key considerations for planning, analysis and design of roundabouts in urban, suburban and rural environments. In addition to a discussion on roundabout characteristics, the document contains sections on the benefits of roundabouts, user considerations, location considerations, operational analysis, design considerations, and costs.

The information presented in this summary outlines the principles described in the FHWA document Roundabouts: An Informational Guide, published in 2000, and the forthcoming second edition of that document expected to be published later this year. Specific considerations of mini-roundabouts are included in the separate "Mini-Roundabouts (FHWA-SA-10-007)".

<http://safety.fhwa.dot.gov/intersection/roundabouts/fhwasa10006/>

<http://safety.fhwa.dot.gov/intersection/roundabouts/fhwasa10007/>





2011 NORTHEASTERN DISTRICT MEETING

ite

DANFORDS
HOTEL & MARINA

SAVE THE DATE
MAY 25TH - 27TH

25 EAST BROADWAY • PORT JEFFERSON, NY 11777 • TEL 1.800.332.6367 • WWW.DANFORDS.COM

The Annual Meeting of the ITE Northeastern District will be May 25 – 27, 2011. That might seem like a long time away, but now is the time to consider making a presentation and planning for the trip.

Call for Presentations: If there is a project you are working on, or something that you have worked on, and think that it might interest your professional ITE colleagues, then you might want to make a presentation at the District Meeting. You will not have to compose a formal paper – just an abstract. Email the abstract by **December 1st** to the Technical Committee Co-Chairs: Gordon Meth at gmeth@rbagroup.com and Mayer Horn at mhorn@gpinet.com. It would help if you send an email now simply indicating your intention of submitting an abstract.

Some of the potential “hot topics” could include these:

- Complete Streets: For peds, bikes, transit, autos, trucks.
- Sustainability: Environmental, financial, impacts of transit service reductions, impacts of reduced operation and maintenance budgets
- Transportation and Land Use: Transit Oriented Development (TOD), Smart Growth
- Transportation Safety: Street and highway traffic, transit, bikes, ped accidents on transit, countdown ped signals
- Transportation Control: Adaptive traffic signals, transit and traffic control centers, transit signal priority, bus rapid transit/select bus service, real-time controls
- Pricing: Congestion pricing, parking pricing, cordon vs. area pricing, alternatives to pricing, impacts of transit fare and toll increases, conversion of HOV to HOT lanes.

(Continued on page 5)



(Continued from page 4)

Make Trip Plans Now: The meeting will be held at Danford's Inn, Port Jefferson, Long Island, NY – on L.I. Sound. You might want to spend some time, perhaps with family, before or after the meeting, enjoying Long Island. The meeting will be immediately before the Memorial Day holiday. There are a number of events on the Memorial Day weekend so hotel and motel rooms are filling up now according to the Long Island Convention and Visitors Bureau which has just completed a makeover of its web site: www.DiscoverLongIsland.com

Note: This message is not confidential. Please feel free to forward it to anyone who might want to make a presentation to the transportation engineers, planners, analysts, and technicians who will be attending the 2011 Northeastern District ITE meeting.

Register Now!!

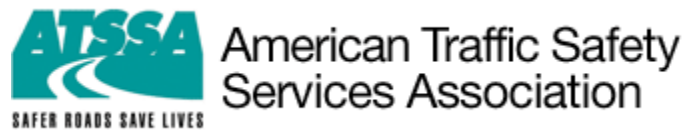
**20th Annual Transportation & Planning Symposium
and
2010 ITE NY Upstate Section Annual Meeting**



Registration deadline is October 18th. See program and registration form at the end of this newsletter.

Roadway Safety Improvements Save Lives

An all new, independent assessment prepared for the American Traffic Safety Services Association (ATSSA) by Science Applications International Corporation (SAIC) asserts increases in roadway safety funding in the US since 2006 have significantly contributed to the decrease in the number of roadway fatalities.



The SAIC-prepared assessment, "Highway Safety Improvement Program (HSIP) Obligations and Fatalities on US Highways: Final Report," indicates a correlation between a 2006 increase in federal-aid funding for roadway safety improvement projects and the steady annual decline in roadway fatalities every year since then. A review of several different factors in the assessment including levels of unemployment, seat belt usage ratios, air bag availability, and a decline in annual vehicle miles travelled during the recent recession revealed that none of those factors "satisfactorily explained the sudden decrease in traffic fatalities."

The assessment does conclude that after more than 10 years with little change in the number of annual roadway fatalities, the number of fatalities dropped year after year after the Highway Safety Improvement Program (HSIP) was established. The total number of fatalities in 2006 (42,708) dropped to 41,259 in 2007, fell again to 37,261 in 2008 and dropped another 8.9 per cent in 2009 to 33,963.

"The American public can now see statistically, through this assessment, that safer roads are a major factor in saving lives," said ATSSA president and CEO Roger Wentz. "Median barriers that prevent crossover crashes, rumble strips that keep people from running off the road, and brighter signs and roadway markings all contribute to safer roads." an astounding \$42.7 million annually." injuries on public roads."

The complete assessment can be viewed at the "Government Relations" tab of www.ATSSA.com.



President's Message

(Continued from page 1)

magnitude of turnover. Be aware of those opportunities when you can introduce yourselves to those in new positions and to reacquaint yourselves with the 'new order.' And if history proves correct, that new order will likely extend into 2011 as a new Commissioner of Transportation is appointed following the November elections.

The early retirement incentive was also open to other organizations and our own Steve Gayle has announced his retirement from the Binghamton Metropolitan Transportation Study at the end of October. Steve is completing 30 years of service and has been Executive Director since 1985. Steve assures us that he has no intention of retiring from the profession and we intend to hold him to that! We certainly extend our sincere congratulations to Steve on his "retirement" – even if it is in name only. Steve has been an iconic figure for both MPOs and ITE and I believe has been personally responsible for adding a degree of respect and recognition for the transportation planning profession unlike any other. We're delighted to hear he'll be hanging around and look forward to many more years of continued association.

What's Coming Your Way

As we head into the fourth quarter, here are a few things that you should be aware of:

2010 Annual Section Meeting: Just around the corner is our 2010 Annual Section Meeting on October 25th and 26th in Latham NY. It's not too late to register. Details are on our website.

Section Elections: Our first electronic election will end on Oct. 20th. If you haven't voted please do so immediately. Our thanks to Mark Sargent who got his going while Meaghan Capuano (formerly Partelow) was on her honeymoon. The election process will be concluded at the Annual Meeting on October 25th.

2011 Annual Section Meeting: It may seem like a long way off but next year's Annual Meeting will be in Buffalo. If you're interested in helping select a location, chair a committee or just be a general volunteer, let me know.

That covers it for now. I'm looking forward to seeing everyone in Latham on the 25th and as always, if you have any concerns, questions or want to get more involved, please feel free to contact me (ttrabold@gbnrtc.org) or any of your Board members.

Until next time,
~Tim



Steve Gayle accepts the District and Section Newsletter Award on behalf of the NY Upstate Section at the Annual Meeting in Vancouver. The award is being presented by International President, Paul Eng-Wong



ITE 2011 Technical Conference and Exhibit

April 3-6, 2011
Walt Disney World Swan
Lake Buena Vista, Florida

Advertise with Us!

Placing an advertisement with the ITE NY Upstate Section exposes you to traffic engineering and transportation planning professionals throughout Upstate New York. Plus, your advertising fee will go towards supporting Section activities and Student Chapters!

Contact Christina Douglas (cdouglas@chacompanies.com) for details and rates.



Highway Design • Bridge Design and Inspection
Traffic Analysis and Design
Transportation Planning and Corridor Studies
Drainage Studies and Design • Construction Administration
Environmental Studies and Assessments

Syracuse • Albany • Rochester • Ellenville • Camp Hill
1-800-724-1070 • www.bartonandloguidice.com



The experience to
listen.
The power to
solve.

Intelligent Traffic Equipment Marketing

1.866.466.4836
www.itemltd.com



LaneLight IN-PAVEMENT

LED LIGHTED CROSSWALK

- Industry leading ultra-bright 1.6 million candela/m² LED output for full daytime visibility
- Maintenance-Free Design
- Best Warranty
- Environmentally Friendly
- Snowplow-Safe
- Solar Power Option
- Programmable



our people and our passion in every project

28 E. Main Street.
First Federal Plaza // Suite 200
Rochester, New York 14614

585.232.5135
info@bergmannpc.com

www.bergmannpc.com



Providing Full Service
Engineering, Planning and
Construction Expertise
to Our Clients for
Over 50 Years

Albany
Buffalo
Rochester
Syracuse
New York City
Newburgh

Imagine
What We Can Do for You!

CHIA
www.chacompanies.com



800.274.9000 ■ www.clarkpattersonlee.com

Albany ■ Binghamton ■ Buffalo ■ Corning ■ Middletown ■
Newburgh ■ Olean ■ Rochester ■ Ticonderoga



Clark Patterson Lee

DESIGN PROFESSIONALS



CMEO
CREIGHTON MANNING ENGINEERING, LLP


- Highway & Bridge Design
- Traffic Engineering
- Civil Site Engineering
- Surveying
- Environmental Studies
- Special Events
- Construction Inspection

518.446.0396 www.cmellp.com

highway/bridge design
transportation planning
traffic engineering
construction inspection
environmental services
landscape architecture

◀ **C&S works
for you.**

www.cscos.com
(877) CS-SOLVE

**FISHER
ASSOCIATES**

A Woman Owned Business Since 1984

DESIGNED AROUND YOU

- Civil/Site Engineering
- Construction Inspection
- Environmental Engineering
- Highway Engineering
- Structural Engineering
- Surveying
- Traffic Engineering
- Visualization

Rochester, NY: 585.334.1310
Buffalo, NY: 716.858.1234
Syracuse, NY: 315.422.4822

www.fisherassoc.com



GMB ENGINEERS & PLANNERS, INC., P.C.

TRANSPORTATION PLANNING • TRAFFIC ENGINEERING DESIGN
TRAFFIC OPERATIONS • GIS DEVELOPMENT / APPLICATION • DATA COLLECTION

GMB - New York
7 Wells Street, Suite 302, Saratoga Springs, NY 12866
Phone: (518) 885-5347
Contact: Chris Cate, ccate@gmb.cc

New York • Florida Certified MBE/DBE www.GMB.cc

Greenman-Pedersen, Inc.
Engineering and Construction Services



Teamwork | Quality | Commitment
www.gpinet.com



Albany Babylon **GPI** Buffalo Montebello
(518) 453-9431 (716) 587-5060 www.gpinet.com (716) 633-4844 (845) 368-4050



Paul Fellows
Systems Consultant

Global Traffic Technologies, LLC
Opticom™ Priority Control Solutions
Canoga™ Traffic Sensing Solutions

781-696-7039
651-789-7370 fax
paul.fellows@gtt.com
www.gtt.com

*Building critical
traffic connections™*

**Jim
Napoleon
& Associates**

Traffic Operations & Planning, Accident Reconstruction
104 Kreischer Road Syracuse, New York 13212

James Napoleon, P.E.
Transportation Engineering Consultant
jimmnap1@gmail.com

FAX CELL OFFICE
(315) 452-9625 (315) 569-7685 (315) 452-9611



McFarland Johnson

Highways • Bridges • Traffic
Airports • Environmental • Facilities
Landscape Architecture • Site Development

www.mjinc.com

NY Offices: **Binghamton** 607-723-9421
Canandaigua 585-905-0970 | **Saratoga Springs** 518-580-9380

Smart, Dependable Solutions
from People you Trust



Jason Paananen, AICP
Transportation Planner

- Traffic Engineering
- Transportation Planning
- Transportation Design
- Construction Services
- Land Surveying

3556 Lake Shore Road
Buffalo, NY 14127
(716) 827-8000 or
jpaananen@nussclarke.com

Offices:
Dunkirk, Ellicottville and
North Tonawanda



Bob LeSueur
Regional Sales Manager
Northeast

Sensys Networks, Inc.

+1 (410) 404-3991 mobile
+1 (510) 898-2237 office
blesueur@sensysnetworks.com

www.sensysnetworks.com



WWW.SRFA.NET

Traffic Engineering
& Planning Consultants

Using Transportation
to Help Build
Livable Communities

phone 585.272.4660 fax 585.272.4662

3495 Winton Place, Building E, Suite 110
Rochester, New York 14623

Global Expertise.
Local Strength.

Stantec provides progressive transportation planning and design services that integrate all facets of mobility-oriented transportation systems.



One Team. Infinite Solutions.



ENGINEERING • LAND SURVEY • MAPPING • ENVIRONMENTAL
WE DESIGN WITH CONSCIENCE. WE ACT WITH PURPOSE.

NEW YORK OFFICES:

Elma • Jamestown • Syracuse • Saratoga Springs
www.tvga.com • 1.800.291.9366

A Better Way to Work

TYLININTERNATIONAL

www.tylin.com

You may know us by our previous name:
FRA, a T.Y. Lin International Company

- Full-service Engineering & Architecture
- 49 Offices
- 715 Professionals
- ENR Ranking, #17 in Transportation



WATTS ARCHITECTURE & ENGINEERING, PC

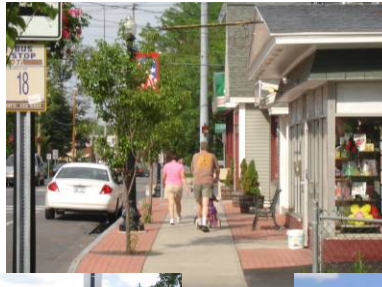
Buffalo & Syracuse
716.206.5100
www.watts-ae.com

Transportation Engineering • Civil/Structural Engineering
Mechanical • Electrical • Plumbing Engineering
Environmental Engineering • Asbestos/Lead Consulting
Construction Inspection • Architecture



2010

**20th Annual Transportation & Planning Symposium
and
ITE New York Upstate Section Annual Meeting**



October 25th and 26th, 2010

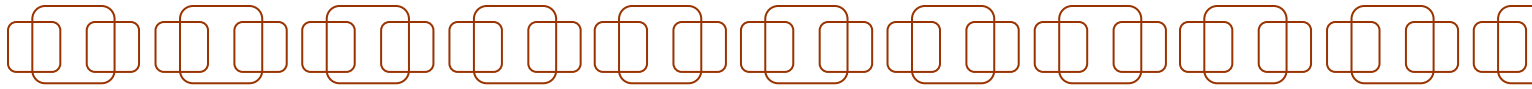
Century House

997 New Loudon Rd. (Route 9)
Latham, NY 12110

Sponsored by:

Albany Society of Engineers
American Society of Civil Engineers
Capital District Planners Association
Institute of Transportation Engineers
NYS Society of Professional Engineers





Program

PDH Credits Pending Approval

Monday, October 25, 2010

- 8:30 am FHWA Workshop Registration Open
- 9:00 am to 12:00 pm **FHWA Workshop – Road Safety Audits:** Performing effective road safety audits/assessments, (RSA's), improves safety and demonstrates to the public an agency's dedication to crash reduction. An RSA is a formal safety performance examination of an existing or future road or intersection by an independent audit team. The RSA training provides practical information on how to conduct an RSA, select a location, and build an independent, multi-disciplinary team. The costs, time, benefits, and common myths and concerns surrounding RSAs will be discussed. Participants learn how to improve transportation safety by applying a new proactive approach. Emphasis is placed on using low cost safety improvements as well as understanding the interaction between the highway and all road users.
- 10:00 am ITE New York Upstate Section Board Meeting (ITE Members Only)
- 12:00 pm Symposium Registration Opens (Lunch on your own)
- 12:00 pm ITE District Board Meeting (ITE Members Only)
- 1:00 pm Opening Remarks: **Mary Ivey, Regional Director, NYSDOT Region 1**
- 1:30 pm **Session 1: Greening of the Highway - Practical observations for planning, design and policy professionals:** This session will address how to keep the "rural" in rural roads and how to improve the look of our urban corridors.
- 3:00 pm Break
- 3:30 pm **Session 2: Crown Point Bridge:** The Crown Point Bridge progressed from sudden closure to groundbreaking for the new bridge in a period of 8 months. NYSDOT and their design consultants will discuss the project history, challenges and lessons learned with fast-tracking a major bridge reconstruction project.
- 5:00 pm Cocktail Hour and Cash Bar
- 6:00 pm Dinner and Keynote Speaker: **Jeffrey Kolb, Division Administrator, FHWA New York Division**

Tuesday, October 26, 2010

- 8:30 am Registration, Continental Breakfast
- 9:00 am **Session 3: Subsurface Utility Engineering (SUE):** The seminar will cover the origination of Subsurface Utility Engineering (SUE); the definition, as defined by the Federal Highway Administration; a review of the ASCE National Consensus Standard (NCS) and the 4 quality levels developed by the NCS; the driving forces behind SUE; the impacts (positive and negative), goals and challenges of SUE; the SUE investigation process; and utility tracing, marking, and locating equipment and techniques.
- 10:30 am Break
- 11:00 am **Session 4: Urban Highway Reconstruction:** This panel's presentation will identify problems of two specific highway projects and the designs adopted to resolve these. Included will be the resolution of unanticipated conflicts. Feature projects will include the reconstruction of Delaware Avenue in the City of Albany and Congress and Ferry Streets in the City of Troy.
- 12:30 pm Lunch, Keynote Speaker: **Assemblyman Tony Jordan, 112th Assembly District**
- 2:15 pm **Session 5: Modern Toll Collection Alternatives:** A review of some of the current alternatives for modern toll collection systems being considered, planned and installed on toll facilities including the New York State Thruway and I-95 in Maryland.
- 3:45 pm Closing Remarks and Adjourn





| REGISTER FOR: | FEE |
|--|-------|
| <input type="checkbox"/> FHWA Workshop | \$20 |
| <input type="checkbox"/> Symposium Includes dinner on Monday, lunch on Tuesday, all breaks and PDH fees | \$80 |
| Dinner Monday (choose one) <ul style="list-style-type: none"> <input type="checkbox"/> Salmon Fillet <input type="checkbox"/> Chicken Alaska <input type="checkbox"/> Sliced Sirloin <input type="checkbox"/> Tortellini Maribou Lunch Tuesday (choose one) <ul style="list-style-type: none"> <input type="checkbox"/> Eggplant Parmesan <input type="checkbox"/> Sirloin Steak <input type="checkbox"/> Mahi Mahi | |
| <input type="checkbox"/> Dinner Only Does <i>not</i> include sessions or PDHs | \$35 |
| Dinner Monday (choose one) <ul style="list-style-type: none"> <input type="checkbox"/> Salmon Fillet <input type="checkbox"/> Chicken Alaska <input type="checkbox"/> Sliced Sirloin <input type="checkbox"/> Tortellini Maribou | |
| <input type="checkbox"/> Student (Includes all meals, select choices above) | \$20 |
| <input type="checkbox"/> Corporate Sponsor | \$100 |
| Total | |

Registration Form

Name

Company/Agency

Address 1

Address 2

City State Zip

Phone

Email

The Transportation and Planning Symposium will be held at the

Century House

997 New Loudon Rd., Latham, NY 12110

Rooms have been reserved at the Century House under the name: **Transportation Symposium.**

Contact the Century House by October 1, 2010 to reserve a guest room at the special conference rate. Call (518)785-0931 or online at <http://www.choicehotels.com/>

Directions to the Symposium

From the South & West: NYS Thruway to Exit 24. Take I-87 north to Exit 7. Follow signs for Route 9, Latham. Turn right at the light onto Route 9 North. The Inn is one mile on the right.

From the North: Take I-87 south to Exit 7. Follow signs for Route 9, Latham. Turn right at the light on Route 9 North. The Inn is one mile on the right.

From the East: NYS Thruway to Exit B-1 (Berkshire Spur). Continue on I-90 west to Exit 1N. I-87 north to Exit 7. Follow signs for Route 9, Latham. Turn right at the light onto Route 9 North. The Inn is one mile on the right.

Please complete registration information by **October 18th**

Mail registration form and payment to:

Transportation Symposium
c/o Ms. Chris Lilholt, P.E., PTOE
CHA Companies
3 Winners Circle, PO Box 5269
Albany, NY 12205
Phone: (518) 453-8773

Reminder: Monday night dinner is included in the Symposium registration fee!

Lunch is on your own on Monday.

Make Checks Payable to:

Transportation Symposium

Note: In an effort to contain costs, no Vouchers or Purchase Orders will be accepted.